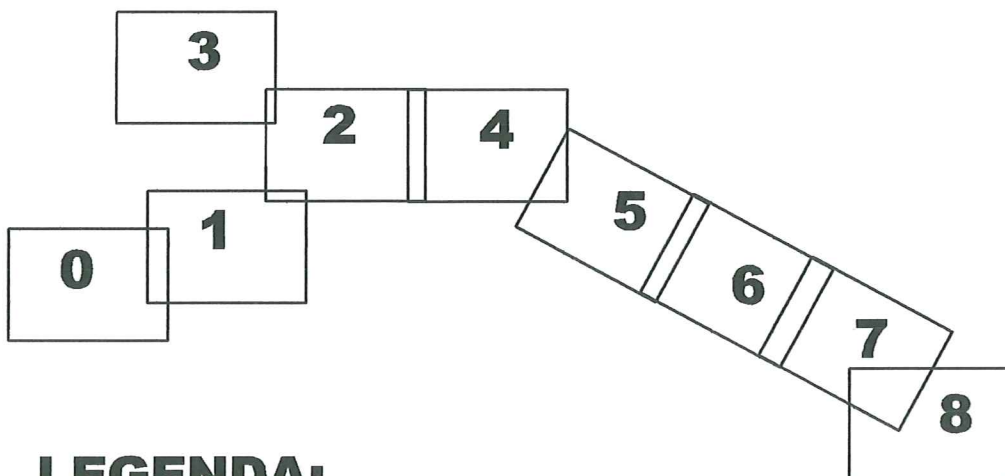


KLAD LISTŮ:



LEGENDA:

ODBOČKY PRO PŘÍPOJKY NA ZÁKLADĚ PROJEKTU PŘÍPOJEK


DOMOVNÍ ČÁST PŘÍPOJKY - NENÍ SOUČÁST STAVBY

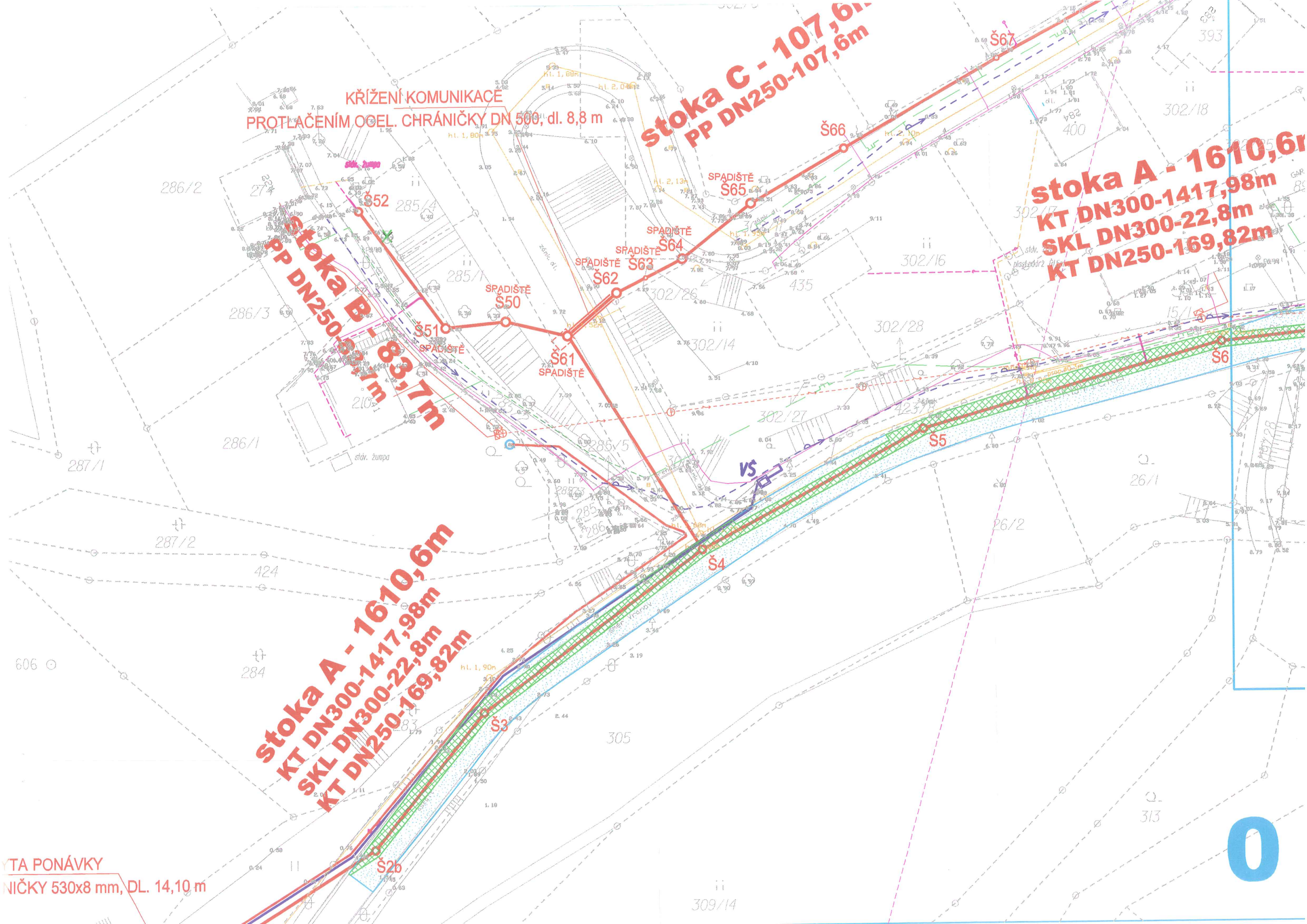
ODBOČKY PRO PŘÍPOJKY - ODHAD

OPRAVA KOMUNIKACE V RÁMCI STAVBY KANALIZACE

OPRAVA KOMUNIKACE V RÁMCI STAVBY KANAL. PŘÍPOJEK

OPRAVA ZBYLÉ PLOCHY KOMUNIKACE B- AB

Revize		Datum revize		Schválil				
		AQUA PROCON s.r.o. Projektová a inženýrská společnost Palackého tř. 12, 612 00 Brno tel.: +420 541 426 011, fax: +420 541 426 012 E-mail: info@aquaprocon.cz www.aquaprocon.cz						
Vedoucí projektu	Ing. Jan Polášek	Paré						
Zástupce vedoucího projektu	Ing. Milan Jokl							
Zodpovědný projektant	Ing. Milan Jokl							
Vypracoval	Ing. Hana Dvořáková							
Kontroloval	Ing. Jaroslav Jarolím							
Investor	Obec Vranov							
Objednatel	IMOS Bmo, a.s.							
Akce	SPLAŠKOVÁ KANALIZACE VČETNĚ ČOV VE VRANOVĚ		Zakázkové číslo	1369812-21				
Část			KANALIZACE	Stupeň	RDS - DOPLNĚNÍ			
			SO/PS	SO 01 PŘÍVODNÍ KANALIZACE	Datum	03/2015		
				Příloha	PŘÍPOJKY V KRAJSKÉ KOMUNIKACI SITUACE	Soubor	Vran_sit_RDS.dgn	
							Tiskový soubor	
			Formát	9A4				
			Měřítko	1:500				
			Číslo přílohy	Revize				
				0				



KŘÍŽENÍ KOMUNIKACE
PROTLAČENÍM OCEL. CHRÁNIČKY DN 500, dl. 8,8 m

Stoka C - 107,6m
PP DN250-107,6m

Stoka A - 1610,6m
KT DN300-1417,98m
SKL DN300-22,8m
KT DN250-169,82m

Stoka B - 107,6m
PP DN250-107,6m

Stoka A - 1610,6m
KT DN300-1417,98m
SKL DN300-22,8m
KT DN250-169,82m

PONÁVKY
530x8 mm, DL. 14,10 m

0

Technical drawing of a sewerage system layout. The drawing shows various sewer lines (Stoka A, B, C, D, E, F, G) and manholes (Š1, Š2, etc.) with dimensions and material specifications.

Stoka A - 1610,6m
KT DN300-1417,98m
SKL DN300-22,8m
KT DN250-169,82m

Stoka B - 223,7m
PP DN250-223,7m

Stoka C - 45,7m
PP DN250-45,7m

Stoka D - 386,85m
PP DN300-102,20m
PP DN250-284,65m

Stoka E - 28,3m
PP DN250-28,3m

Stoka F - 45,7m
PP DN250-45,7m

Stoka G - 10,6m
PP DN250-10,6m

Stoka H - 2,2m
PP DN250-2,2m

Stoka I - 2,2m
PP DN250-2,2m

Stoka J - 2,2m
PP DN250-2,2m

Stoka K - 2,2m
PP DN250-2,2m

Stoka L - 2,2m
PP DN250-2,2m

Stoka M - 2,2m
PP DN250-2,2m

Stoka N - 2,2m
PP DN250-2,2m

Stoka O - 2,2m
PP DN250-2,2m

Stoka P - 2,2m
PP DN250-2,2m

Stoka Q - 2,2m
PP DN250-2,2m

Stoka R - 2,2m
PP DN250-2,2m

Stoka S - 2,2m
PP DN250-2,2m

Stoka T - 2,2m
PP DN250-2,2m

Stoka U - 2,2m
PP DN250-2,2m

Stoka V - 2,2m
PP DN250-2,2m

Stoka W - 2,2m
PP DN250-2,2m

Stoka X - 2,2m
PP DN250-2,2m

Stoka Y - 2,2m
PP DN250-2,2m

Stoka Z - 2,2m
PP DN250-2,2m

Stoka AA - 2,2m
PP DN250-2,2m

Stoka AB - 2,2m
PP DN250-2,2m

Stoka AC - 2,2m
PP DN250-2,2m

Stoka AD - 2,2m
PP DN250-2,2m

Stoka AE - 2,2m
PP DN250-2,2m

Stoka AF - 2,2m
PP DN250-2,2m

Stoka AG - 2,2m
PP DN250-2,2m

Stoka AH - 2,2m
PP DN250-2,2m

Stoka AI - 2,2m
PP DN250-2,2m

Stoka AJ - 2,2m
PP DN250-2,2m

Stoka AK - 2,2m
PP DN250-2,2m

Stoka AL - 2,2m
PP DN250-2,2m

Stoka AM - 2,2m
PP DN250-2,2m

Stoka AN - 2,2m
PP DN250-2,2m

Stoka AO - 2,2m
PP DN250-2,2m

Stoka AP - 2,2m
PP DN250-2,2m

Stoka AQ - 2,2m
PP DN250-2,2m

Stoka AR - 2,2m
PP DN250-2,2m

Stoka AS - 2,2m
PP DN250-2,2m

Stoka AT - 2,2m
PP DN250-2,2m

Stoka AU - 2,2m
PP DN250-2,2m

Stoka AV - 2,2m
PP DN250-2,2m

Stoka AW - 2,2m
PP DN250-2,2m

Stoka AX - 2,2m
PP DN250-2,2m

Stoka AY - 2,2m
PP DN250-2,2m

Stoka AZ - 2,2m
PP DN250-2,2m

Stoka BA - 2,2m
PP DN250-2,2m

Stoka BB - 2,2m
PP DN250-2,2m

Stoka BC - 2,2m
PP DN250-2,2m

Stoka BD - 2,2m
PP DN250-2,2m

Stoka BE - 2,2m
PP DN250-2,2m

Stoka BF - 2,2m
PP DN250-2,2m

Stoka BG - 2,2m
PP DN250-2,2m

Stoka BH - 2,2m
PP DN250-2,2m

Stoka BI - 2,2m
PP DN250-2,2m

Stoka BJ - 2,2m
PP DN250-2,2m

Stoka BK - 2,2m
PP DN250-2,2m

Stoka BL - 2,2m
PP DN250-2,2m

Stoka BM - 2,2m
PP DN250-2,2m

Stoka BN - 2,2m
PP DN250-2,2m

Stoka BO - 2,2m
PP DN250-2,2m

Stoka BP - 2,2m
PP DN250-2,2m

Stoka BQ - 2,2m
PP DN250-2,2m

Stoka BR - 2,2m
PP DN250-2,2m

Stoka BS - 2,2m
PP DN250-2,2m

Stoka BT - 2,2m
PP DN250-2,2m

Stoka BU - 2,2m
PP DN250-2,2m

Stoka BV - 2,2m
PP DN250-2,2m

Stoka BW - 2,2m
PP DN250-2,2m

Stoka BX - 2,2m
PP DN250-2,2m

Stoka BY - 2,2m
PP DN250-2,2m

Stoka BZ - 2,2m
PP DN250-2,2m

Stoka CA - 2,2m
PP DN250-2,2m

Stoka CB - 2,2m
PP DN250-2,2m

Stoka CC - 2,2m
PP DN250-2,2m

Stoka CD - 2,2m
PP DN250-2,2m

Stoka CE - 2,2m
PP DN250-2,2m

Stoka CF - 2,2m
PP DN250-2,2m

Stoka CG - 2,2m
PP DN250-2,2m

Stoka CH - 2,2m
PP DN250-2,2m

Stoka CI - 2,2m
PP DN250-2,2m

Stoka CJ - 2,2m
PP DN250-2,2m

Stoka CK - 2,2m
PP DN250-2,2m

Stoka CL - 2,2m
PP DN250-2,2m

Stoka CM - 2,2m
PP DN250-2,2m

Stoka CN - 2,2m
PP DN250-2,2m

Stoka CO - 2,2m
PP DN250-2,2m

Stoka CP - 2,2m
PP DN250-2,2m

Stoka CQ - 2,2m
PP DN250-2,2m

Stoka CR - 2,2m
PP DN250-2,2m

Stoka CS - 2,2m
PP DN250-2,2m

Stoka CT - 2,2m
PP DN250-2,2m

Stoka CU - 2,2m
PP DN250-2,2m

Stoka CV - 2,2m
PP DN250-2,2m

Stoka CW - 2,2m
PP DN250-2,2m

Stoka CX - 2,2m
PP DN250-2,2m

Stoka CY - 2,2m
PP DN250-2,2m

Stoka CZ - 2,2m
PP DN250-2,2m

Stoka DA - 2,2m
PP DN250-2,2m

Stoka DB - 2,2m
PP DN250-2,2m

Stoka DC - 2,2m
PP DN250-2,2m

Stoka DD - 2,2m
PP DN250-2,2m

Stoka DE - 2,2m
PP DN250-2,2m

Stoka DF - 2,2m
PP DN250-2,2m

Stoka DG - 2,2m
PP DN250-2,2m

Stoka DH - 2,2m
PP DN250-2,2m

Stoka DI - 2,2m
PP DN250-2,2m

Stoka DJ - 2,2m
PP DN250-2,2m

Stoka DK - 2,2m
PP DN250-2,2m

Stoka DL - 2,2m
PP DN250-2,2m

Stoka DM - 2,2m
PP DN250-2,2m

Stoka DN - 2,2m
PP DN250-2,2m

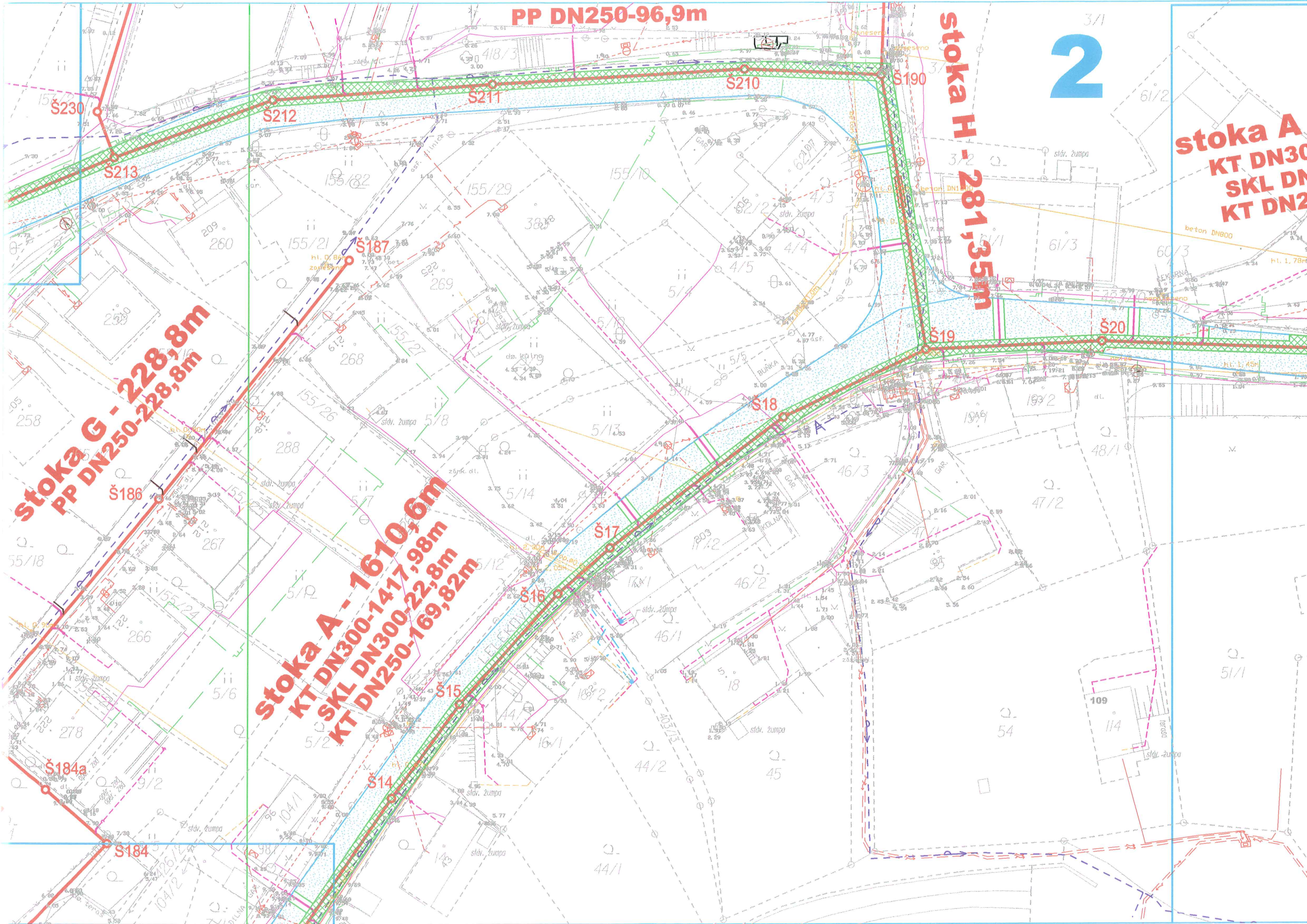
Stoka DO - 2,2m
PP DN250-2,2m

Stoka DP - 2,2m
PP DN250-2,2m

Stoka DQ - 2,2m
PP DN250-2,2m

Stoka DR - 2,2m
PP DN250-2,2m

Stoka DS -



PP DN250-96,9m

stoka H - 281,35m

2

stoka A
KT DN300
SKL DN300
KT DN250

stoka G - 228,8m
PP DN250-228,8m

stoka A - 1610,6m
KT DN300-1417,98m
KT DN250-169,82m

